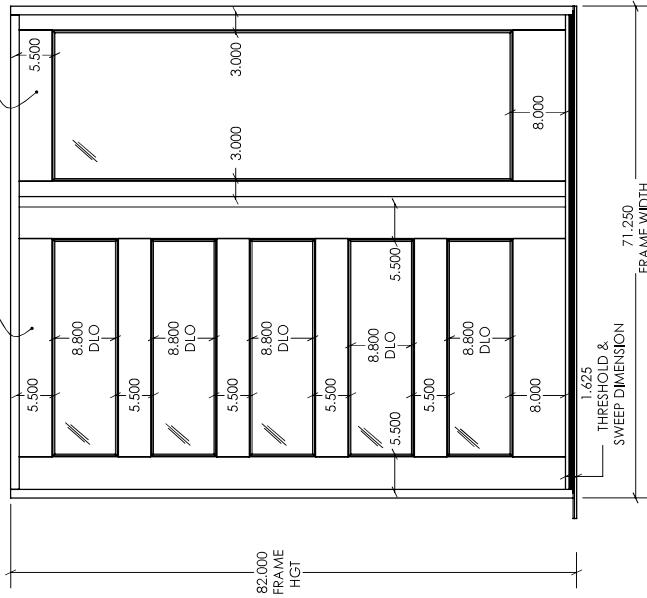
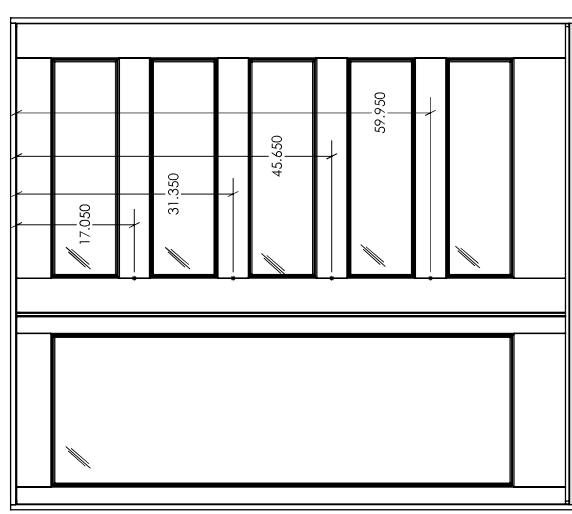


DOOR SLAB
(INSWING) (ACTIVE)
(SEE PAGE 2 FOR DETAILS)

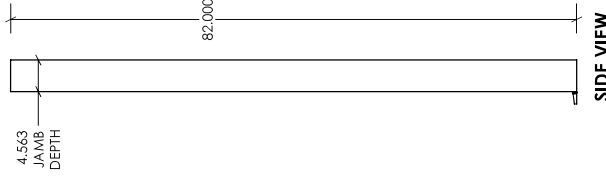
SWINGING SIDELIGHT
(INSWING) (NON-ACTIVE)
(SEE PAGE 2 FOR DETAILS)



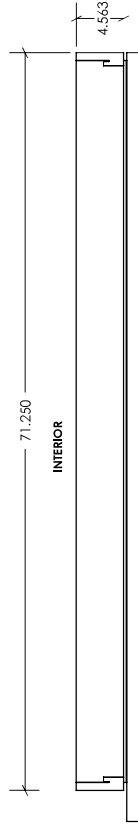
**FRONT VIEW
(FROM EXTERIOR)**



**FRONT VIEW
(FROM INTERIOR)**



SIDE VIEW



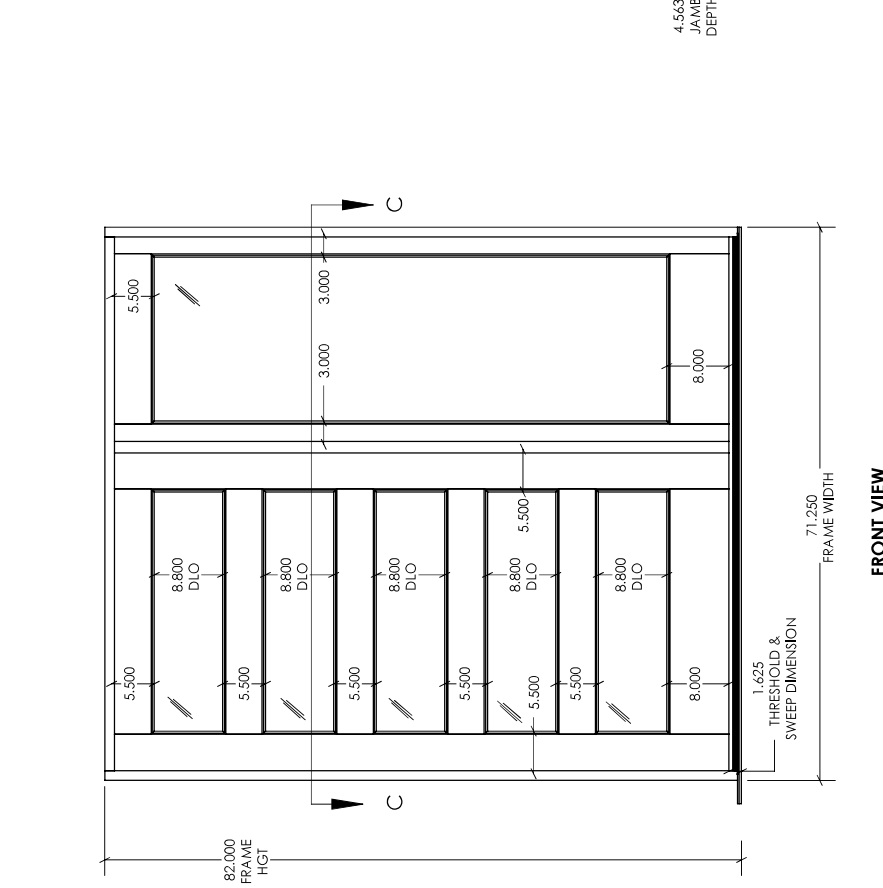
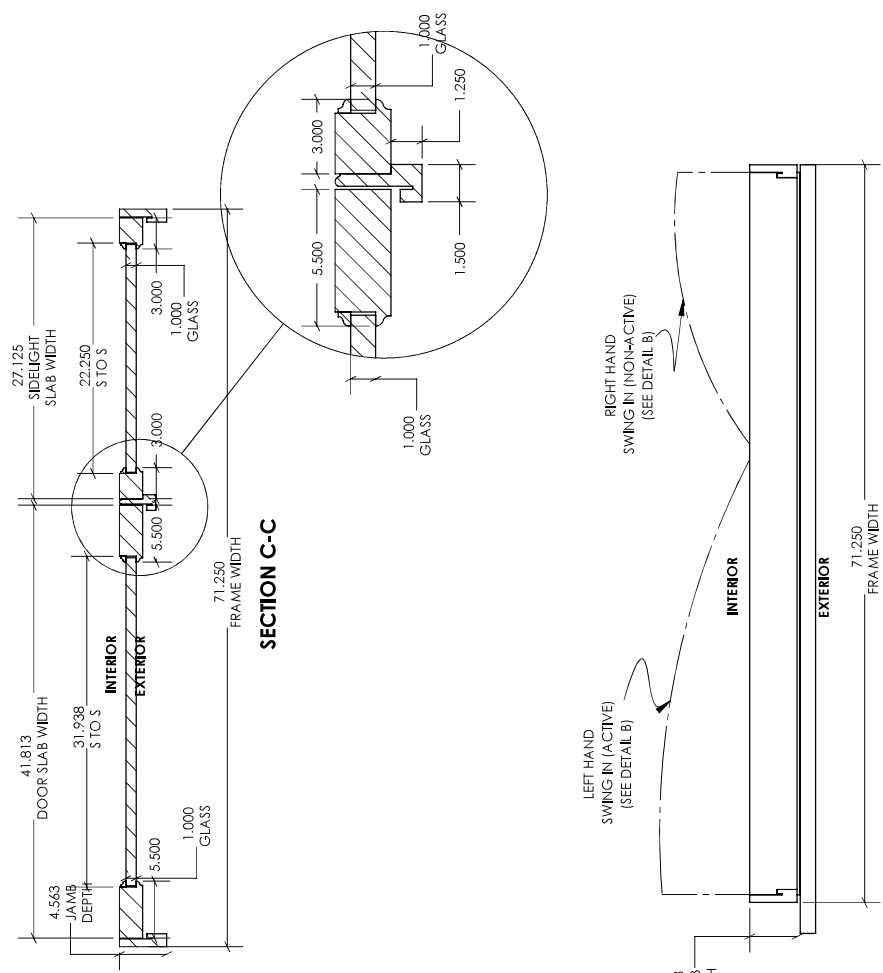
TOP VIEW

General Notes:

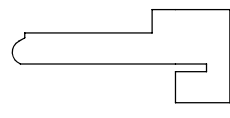
1. All lumber = Hard maple & Mahogany
(See Drawing for details - Page 5 & 6)
2. All glass = 1" tempered I.G. Glass.
(***COLORED GLASS *** = COOL GRAY)
3. Ogee Sticking
4. Frame Delivered Knocked Down (KD)
5. 4.5625" Jamb Depth
6. Finish = Stained (By DW&D)
7. Machining for Door Hardware supplied
(GU Hardware/Operating Int/Non-Operating Ext)
8. Machining for Hinges Supplied
(4) 4 1/2" Emteck Hinges (See Hinge detail for locations)
9. G-Lon Supplied & Installed with Frame
10. 1.625" undercut figured for Door Sweep & Threshold
1/2" Door Sweep & Adjustable Pemko Threshold
(See Threshold detail)

**INTELLECTUAL PROPERTY OF
ADAMS ARCI TECUTAL MILLWORK**

ADAMS ARCHITECTURAL MILLWORK CO	2225 Kerper Blvd. Dubuque, IA 52001 563-690-1358 p 563-557-8852 f
NAME	DATE
DRAWN	
ESTIMATOR	
SHOP	
OP. MANAGER	
TITLE:	
CUSTOMER APPROVAL:	
UNLESS OTHERWISE SPECIFIED: COMMENTS:	
DIMENSIONS ARE IN INCHES	
TOLERANCES:	
FRACTIONAL	
DO NOT SCALE DRAWING	
SIZE	DWG. NO.
B	B
1:24	SHEET 1 OF 6



**FRONT VIEW
(FROM EXTERIOR)**



ASTRAGAL



**GLASS STOP
(OGEE DESIGN)**

NAME	DATE	ADAMS ARCHITECTURAL MILLWORK CO	2225 Kerper Blvd. Dubuque, IA 52001 563-690-1358 P 563-557-8852 F
DRAWN			
ESTIMATOR			
SHOP			
OP. MANAGER		TITLE:	
CUSTOMER APPROVAL:		COMMENTS:	
UNLESS OTHERWISE SPECIFIED:		SIZE	DWG. NO.
DIMENSIONS ARE IN INCHES		B	
TOLERANCES:			REV
FRACTIONAL			B
DO NOT SCALE DRAWING		1:24	SHEET 3 OF 6

**INTELLECTUAL PROPERTY OF
ADAMS ARCHITECTURAL MILLWORK**