



## Statement Entry Door & Recreated Storm Door

### Statement Entry: Double Door with Transom



**Entry doors add value & and a sense of your style to new construction homes or remodeling projects.** In the case of the home above, the entry door unit we fabricated offers greater security with a three-point locking system. The double doors are painted to the exterior and finished with a stain on the interior, adding even more personalization to this home.

The three-point locking system provides greater security for an entry door. As described by the name, the door locks in three locations: the top of the door, the bottom of the door, and at the handle. For tall doors, this also helps to stabilize the doors for years and years of use.



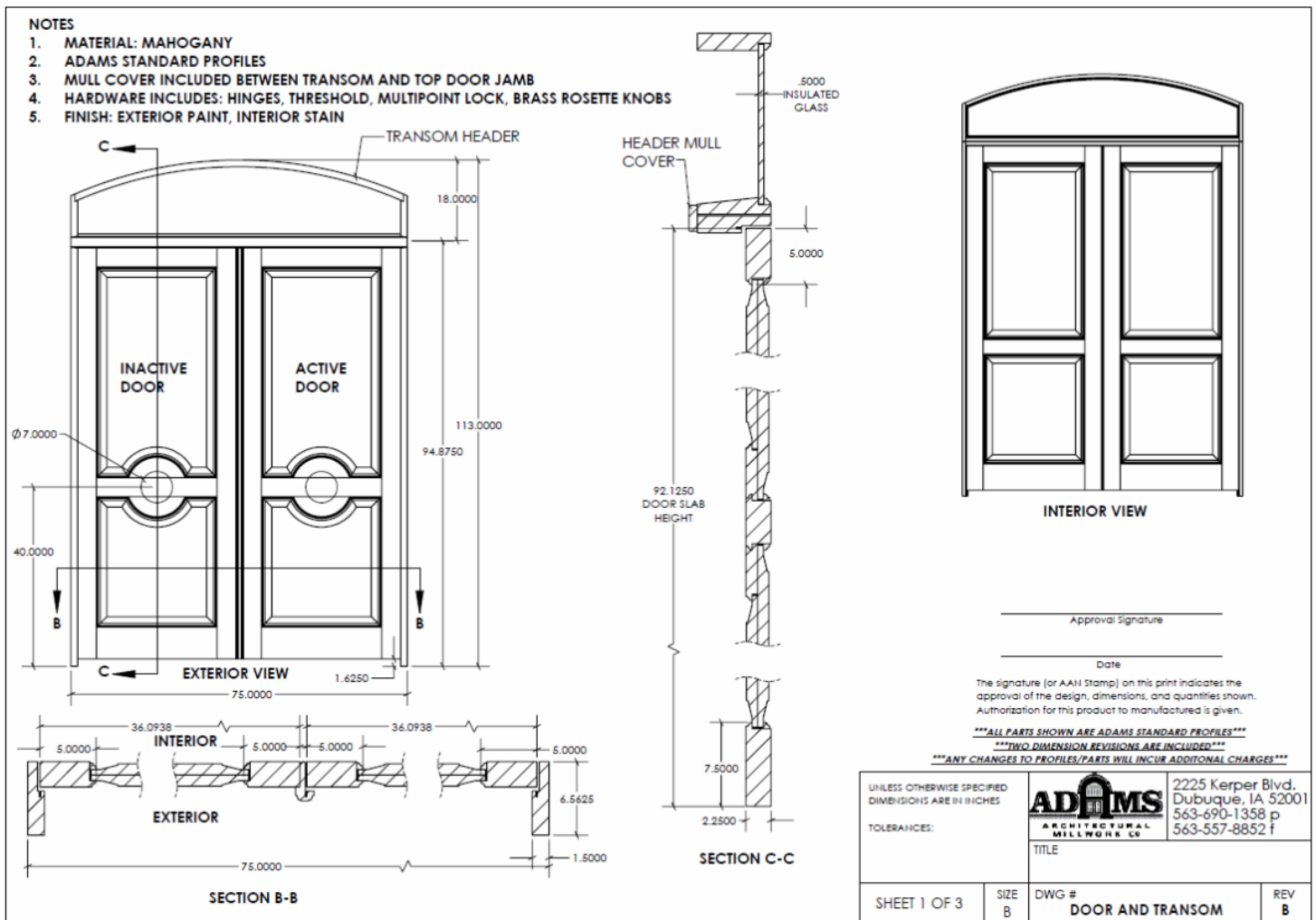
Our CNC is individually programmed to accurately route out for the hardware. The locking system is then installed and hidden seamlessly in the door stile. The points of contact are allowed clear access and with the turn of one button, all three locks are engaged. It is available for use with a variety of handlesets that appeal to all styles.



We also have the ability with our CNC to route for wiring within the door. This lets you have a custom wood door with modern security features. Whether you prefer glass options or solid panels to fit your style, we work with our customers to ensure the design works for both style and hardware.

A simple yet impactful design, the 36" x 96" doors were fabricated from Mahogany. The lumber boasts beautiful grain patterns that you can easily see in the frame pictured. The wood panels have not been installed at this point.

This design is made slightly more intriguing with the interior of the door showing a straight lockrail, not the circular design of the exterior. This detail provides both interest and a way to show off the brass rosette knobs to perfection. It also allows the interior to stand on its own with a lovely stained finish, rather than the paint color of the exterior.



The approval drawing showing how the door was to be constructed. We provide these for all of our products to ensure the customer understands what the finished product will look like, drawn to scale. The specifications are included to ensure that everyone knows how the product will be fabricated and can make edits early in the process to iron out all details before production.



The exterior panels are fabricated of a weather-resistant material that works well with painted doors. The panel raise shows very clean lines which is set off by the round of the lockrail for the doorknob.



More of the gorgeous Mahogany grain pattern is visible on the solid wood panels for the interior of the door. The profile of the interior panel matches the exterior panel and the wood stop that holds them in place is exactly the same profile used on the exterior.



### Hardware Feature

Popular in Europe, the center door knob used for this project is a 4" knob and can be combined with either a 4" or 7" rosette.

This particular knob is from Baxter and is categorized to fit Traditional, Georgian, or Transitional styles. It can be used on an active or inactive door. Often decorative, these large knobs are a gracious statement for Row Houses, Townhouses, and Estates.



The finished door installed with all of the hardware incorporated. The design is simple, clean, and impressive. The transom creates additional interest and complements dormer windows above. The rosettes behind the door handles add a touch of color and a focal piece, allowing the door to become an inviting entry.

## Duplicating an Arched Storm Door

A closer look at the lites of the storm insert. This Prairie style construction is considered part of the Arts & Crafts movement, made popular in the 1900s in the Chicago area. The craftsmanship for which this style is known is exemplified in the detailing



of the top part of this insert: strong geometric influence, connected indoor and outdoor spaces (lots of glass), and minimal ornamentation.

Our storm insert is narrower than the previous storm door, letting in just a little more light & greater viewing.



This was a unique storm and screen door that our customer wanted to match. The existing storm door contained an insert with prairie-style lites that highlighted the arched top of the door. The customer wanted to maintain the look with a new door.



Individual hand-fitting of the prairie lite pieces make this a handcrafted work of art.



#### Installing the Glass into the Window Sash

It took a great deal of experience and patience to cope and mitre the simulated divided lite muntin bars at several different angles to make them fit properly. Our craftsmen did a great job as seen in the images below which document the progress.



## Historical Home

Another project that we enjoyed highlighting was an historic home renovation.

Some of the windows needed to be repaired or replaced and we worked with the customer to ensure it was historically accurate.

### Historic Window Project

## Storm Windows

Whether you are looking for an historic product to maintain the authenticity of a historic property or you have a home where the warmth and value of wood storm and screen windows is desired, we can fulfill either requirement. Our traditional storm windows and traditional screen windows are fabricated with an eye to the historical. Our combination storm and screen windows offer more options while still giving the look of a period home.



Adams Architectural also has the ability to work with you to create more energy efficient options using insulated glass. Storm windows with insulated glass can also help with noise reduction from a busy street. We can fabricate with an arched or half-round top as well. We are truly a custom shop and fabricate to your width and height dimensions.

**For all of our storm window offerings, you can access our website:**  
**[Adams Architectural Storm Windows](#)**

### **[Your Next Step...Request a Quote](#)**

There are three different ways you can request an estimate for a new or replacement storm window:

1. Use our custom quote form: **[Storm Window Custom Quote Form](#)**
2. Complete the **[Storm Window Measurement Form](#)** and email it to us
3. Send an email with measurement information (width x height) and the type(s) of storm window you would like quoted to **[info@adamsarch.com](mailto:info@adamsarch.com)**

If you are an architect, contractor, or an owner of a historical building or home who is looking to renovate a property, we want to assist you with your architectural millwork needs.

We fabricate historically accurate:

windows  
window sash  
storm windows  
doors

storm doors



Our capabilities include manufacturing custom millwork for homes and buildings across the United States. We can fabricate products that most large window and door companies will refuse.

Please give us a call at 1.888.285.8120 or visit our website at [www.adamsarch.com](http://www.adamsarch.com) and get your transformation started today.

**A Solid History of Quality, Timely Delivery & Affordability**

***Adams Architectural Millwork Co.***

2225 Kerper Blvd.  
Dubuque, IA 52001  
Toll Free 888-285-8120



**Contact Us**

Adams Architectural Millwork Co. | 2225 Kerper Blvd, Dubuque, IA 52001

[Unsubscribe {recipient's email}](#)

[Update Profile](#) | [Constant Contact Data Notice](#)

Sent by [info@adamsarch.com](mailto:info@adamsarch.com) powered by



Try email marketing for free today!