

SimpleSwitch™ Storm & Screen Door



ARCHITECTURAL
MILLWORK CO

Specifications



Full Lite



2/3rds Lite



Half Lite

The exceptional design of the SimpleSwitch™ Storm and Screen Door makes it an attractive addition to your entrance. The wood-framed inserts stay securely in place with butterfly turn buttons. However, the "switch" between a clear, tempered glass insert and an aluminum charcoal screen insert is easily accomplished. We use solid wood with no finger joints, so this product is built to last.

Standards

- 1-1/8" thick solid wood door
- Stiles are 4-1/2" wide
- Top rail is 4-1/2" wide
- Mid rail is 5" wide
- Bottom rail is 7" wide
- 1/8" clear, tempered safety glass
- Panels, if applicable, are 3/4" thick

Options

- Factory priming
- Lumber: Pine and Mahogany
(other options available upon request)
- Screen: aluminum, bronze, or pet screen
- Butterfly turn buttons or Cam fasteners
- Horizontal or vertical panels
- Divided lites (custom configurations)
- Machining for hardware

These doors are fabricated in two stock sizes: 32" x 81" and 36" x 81"

Custom sizes available upon request.

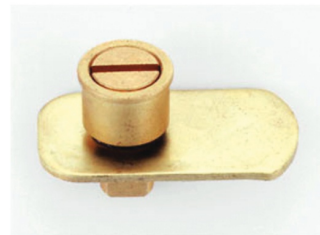
Any changes from standards are offered at an additional charge.



Turn Button



Cam Fastener



In Lock Position

Standardly, turn buttons are provided to hold the insert in place. When you upgrade to cam fasteners, there is a fin that extends into the insert (see images above). All that is required is a flat-head screwdriver to securely lock the insert in place. Either method used is easy to change between a screen insert or a storm insert in a SimpleSwitch™ door.



Pine, Custom Lites

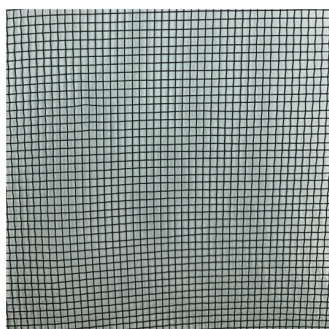


Arched Top with Cam Fasteners

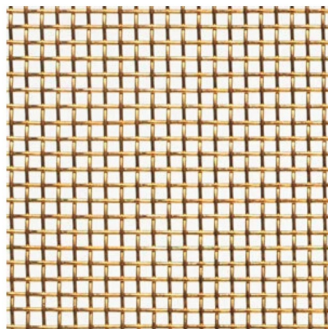


Mahogany, Lites

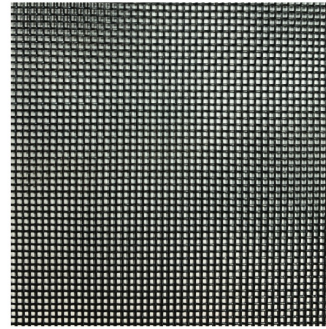
We fabricate our storm and screen doors from clear White Pine but also promote using Mahogany where weather-resistant materials are important. Both types of lumber stain and paint well to either match your entry door or accent it.



Charcoal Aluminum Mesh



Bronze Mesh



Super Screen

Options

SimpleSwitch™ Storm & Screen Door

Whether you are working on an historic property, a remodel, or a new build, our SimpleSwitch™ Storm & Screen Door will fit your needs. Flat top, arched top, half round top, or even gothic top, Adams Architectural Millwork can fabricate it. We can match dimensions for an entry door or create the door you have been dreaming of owning.



2225 Kerper Blvd.
info@adamsarch.com

ADAMS
ARCHITECTURAL
MILLWORK CO
www.adamsarch.com

Dubuque, IA 52001
1-888-285-8120