

Foley-Brower-Bohmer House, Curved Single Hung Windows



The Foley-Brower-Bohmer House, constructed in 1889 in the Richardsonian Romanesque style, stands as a significant historical landmark in St. Cloud, Minnesota. Initially built for Timothy Foley, a prominent figure in the lumber and railroad industries, the house later passed to his brother Thomas Foley in 1895. In 1902, it was acquired by lawyer and politician Ripley B. Brower, eventually being sold to businessman and banker William J. Bohmer in 1923.



Originally built with curved windows one of the past owners put in these square/flat windows in the turret.



With new owners, it was decided to bring this mansion back to its former glory and bring back the curved windows.



With the size, weight & complexity of these windows, working close with the contractors was vital to make a perfect fit.



Templates like this are sent out to ensure the radius and dimensions of the windows.



2-1/4" thick window sash parts are being fabricated.



The Foley waits patiently to get the rest of its new windows replaced.

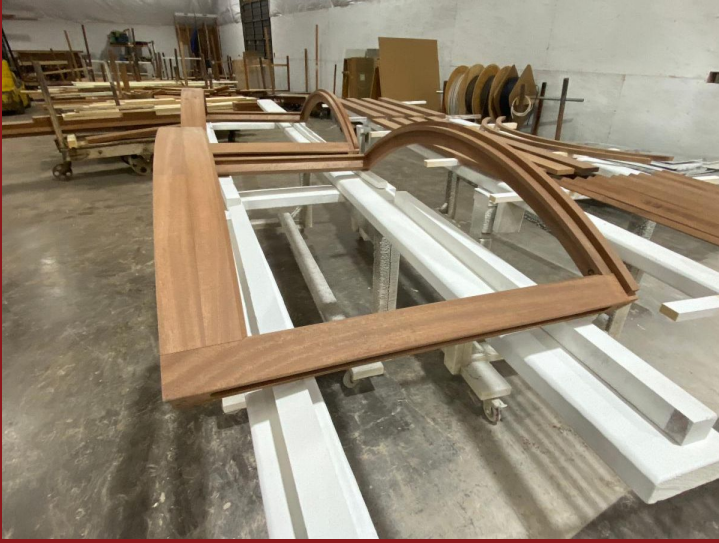
Curved Single Hung Windows

The unique curved windows that add to the houses distinctive character. These windows not only enhance the mansion's appearance but also serve a practical function by allowing ample natural light and ventilation into the interior spaces. We provided a mix of fixed sash as well as single hung windows.

Specifications

- 2-1/4" Thick Sash
- Mahogany Sills & Quarter Sawn White Oak sash & frame
- 1" insulated curved glass
- Windows range in size up to 60" x 100"



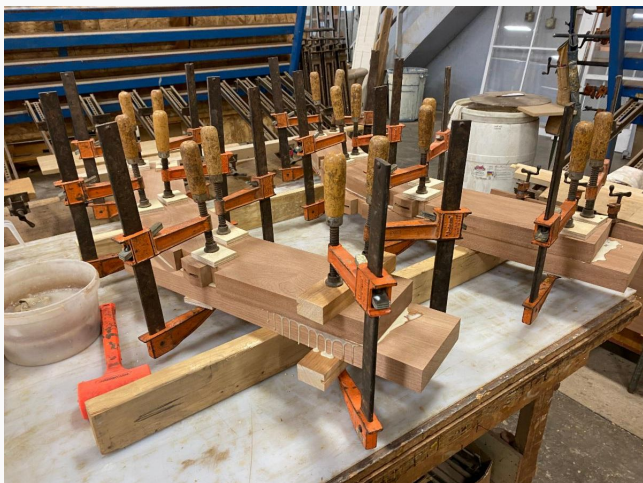


The size and weight of these windows was truly impressive, some big enough to walk through.



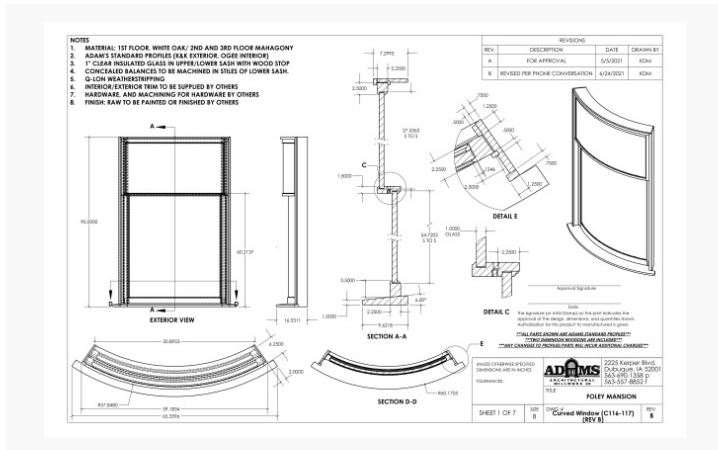
Unpackaging shipment of curved insulated glass from our supplier.

This project is highlighted in a recent company video that you can view here:
<https://www.youtube.com/watch?v=aff6Ya0jpZs>





Installing the glass presented a challenge, but it ended up turning out great!

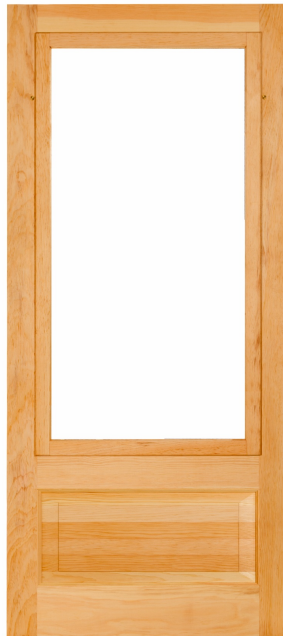


Other Product Offerings

Storm Doors



Half Lite



2/3rd Lite

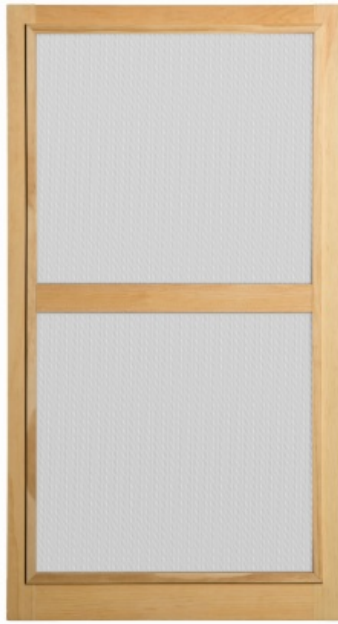


Full Lite

Storm Windows



Traditional Storm Window



Traditional Screen Window



Combination Storm/Screen

Our standard is to fabricate storm windows and storm doors from Northern White Pine, but we also use Mahogany for additional weatherability and durability. To retain the historic appeal of a home, a wood storm window is unmatched. We also offer modern comforts with styles that have inserts that can be changed from the interior of the house. The beauty of wood is in its versatility: you can stain a storm door to enhance the grain or paint to match your trim or house color.

[Your Next Step...Request a Quote](#)

There are three different ways you can request an estimate for a new or replacement storm window:

1. Use our custom quote form: [Storm Window Custom Quote Form](#)
2. Complete the [Storm Window Measurement Form](#) and email it to us
3. Send an email with measurement information (width x height) and the type(s) of storm window you would like quoted to info@adamsarch.com

Our capabilities include manufacturing custom millwork for homes and buildings across the United States. We can fabricate products that most large window and door companies will refuse.

Please give us a call at 1.888.285.8120 or visit our website at www.adamsarch.com and get your transformation started today.

A Solid History of Quality, Timely Delivery & Affordability

Adams Architectural Millwork Co.

2225 Kerper Blvd.
Dubuque, IA 52001
Toll Free 888-285-8120



Contact Us

Adams Architectural Millwork Co. | 2225 Kerper Blvd | Dubuque, IA 52001 US

[Unsubscribe](#) | [Update Profile](#) | [Constant Contact Data Notice](#)



Try email marketing for free today!