



Having previously undertaken tasks throughout this distinguished home, today our focus turns to the breakfast room. The Queen Anne architecture (built by the Sinclair family), 1925 Grant Wood Sleeping Porch (with a unique plaster relief) and 1929 Skinner player pipe organ that were added by the Douglas family, and 1930 Grizzly Bar and Tahitian Room added by the Hall family reflect the vibrant history of three remarkable families.

Before



After



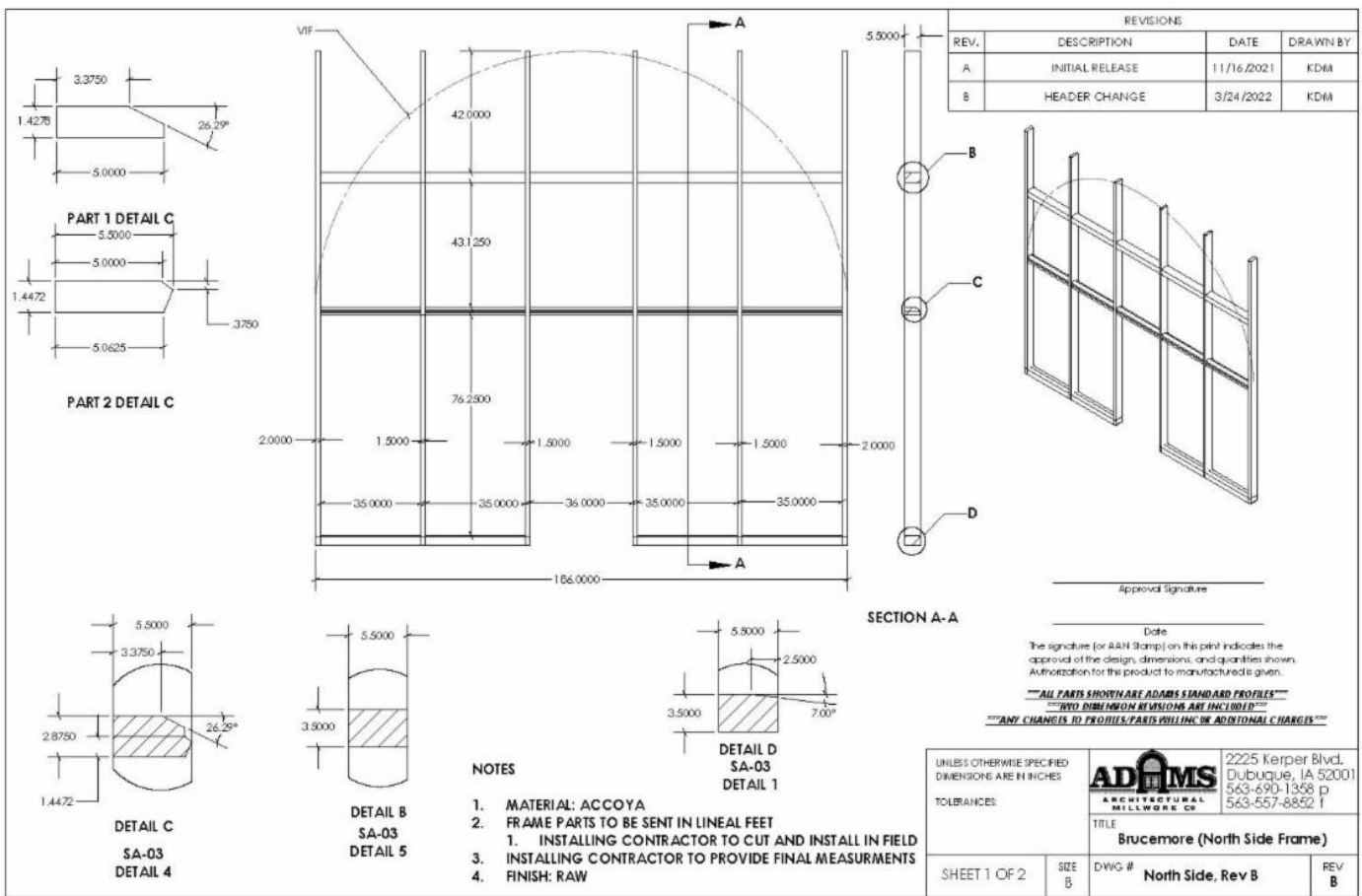
Phase One - The Framework (Super Structure)

This project at Brucemore unfolds in two distinct phases. In Phase One, the focus was on supplying contractors with framework fabricated from Accoya wood.



The framing and stop for the North Breakfast Porch featured a 2-part design with custom molding on the front.

Shop Drawings for North Side Framing



Phase Two

In the second phase of the Brucemore project, attention turns to measuring and constructing the windows, all designed with true divided lights utilizing Mahogany to match the original construction.





The contractor-provided templates to ensure precise measurements that were brought to the shop and meticulously drawn up. Combining CNC technology with traditional techniques like mortise and tenon joints ensures durability and authenticity.



Pictured above is the sash without the cutout.



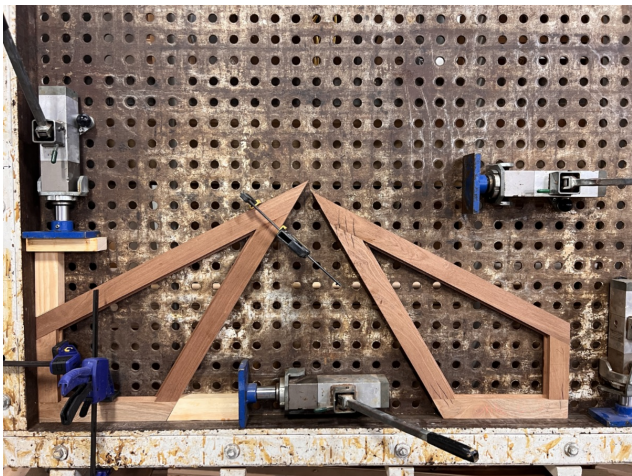
The project primarily revolved around replicating the historic windows of Brucemore, Templates were used to scribe the custom cut-out to ensure they maintained their original



Final product with paint.

aesthetic.

Its Prime Time



This project is highlighted in a recent company video that you can view here:
https://www.youtube.com/shorts/Y6-0Myx_6ok



Josh measured carefully before scribing the glass for multiple unique cuts. Glass was hand-cut into custom shapes to create the true divided light windows.



54 separate panes of glass were required to be cut for the windows on this side alone.



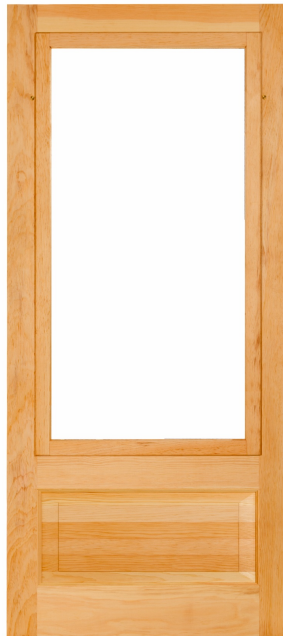
Visit our website to see more photos on the Brucemore project!

Other Product Offerings

Storm Doors



Half Lite



2/3rd Lite

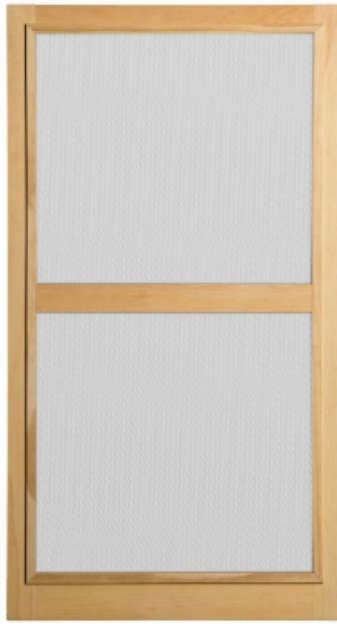


Full Lite

Storm Windows



Traditional Storm Window



Traditional Screen Window



Combination Storm/Screen

Our standard is to fabricate storm windows and storm doors from Northern White Pine, but we also use Mahogany for additional weatherability and durability. To retain the historic appeal of a home, a wood storm window is unmatched. We also offer modern comforts with styles that have inserts that can be changed from the interior of the house. The beauty of wood is in its versatility: you can stain a storm door to enhance the grain or paint to match your trim or house color.

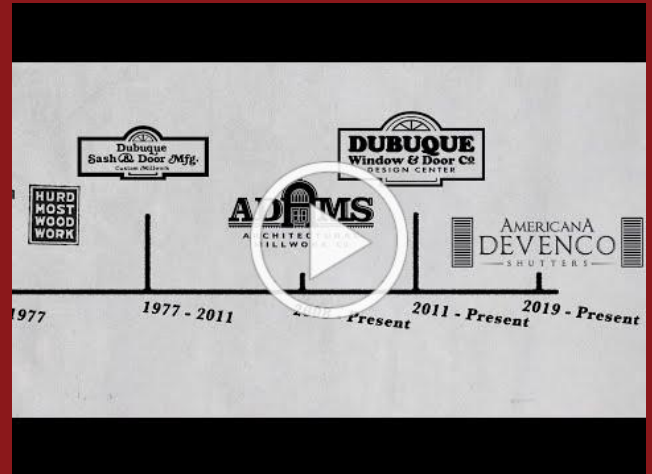
[Your Next Step...Request a Quote](#)

There are three different ways you can request an estimate for a new or replacement storm window:

1. Use our custom quote form: [Storm Window Custom Quote Form](#)
2. Complete the [Storm Window Measurement Form](#) and email it to us
3. Send an email with measurement information (width x height) and the type(s) of storm window you would like quoted to info@adamsarch.com

Our capabilities include manufacturing custom millwork for homes and buildings across the United States. We can fabricate products that most large window and door companies will refuse.

Please give us a call at 1.888.285.8120 or visit our website at www.adamsarch.com and get your transformation started today.



A Solid History of Quality, Timely Delivery & Affordability

Adams Architectural Millwork Co.

2225 Kerper Blvd.
Dubuque, IA 52001
Toll Free 888-285-8120



Contact Us

Adams Architectural Millwork Co. | 2225 Kerper Blvd | Dubuque, IA 52001 US

[Unsubscribe](#) | [Update Profile](#) | [Constant Contact Data Notice](#)



Try email marketing for free today!