



The History Center

Historic Building Refurbishment

The History Center in Cedar Rapids, IA reopened this year in the newly renovated Douglas Mansion. This Mansion Hill home was originally completed in 1897 with construction starting in 1895. The Douglas family started a cereal mill which eventually merged with the Quaker Oats Company. A magnificent Colonial Revival, the Douglas home boasts many architectural details that are important to preserve. Adams Architectural Millwork provided components for the renovation of this building.



Before pictures/getting started



Measuring and taking out old windows



New storm windows in place

A great deal of work and time goes into fabricating bowed storm windows to get the correct radius and making sure everything is perfectly square to maintain its fit.



Tenoning the Rails



Completed Storm Window



Placing Glass



View from the Interior

Note the bowed curtain rod in the lower right image. We also supplied that component for this project as part of the special "round room."

We provided two sets of exterior doors for this project as well as the single door pictured below. All entry doors are fabricated from Mahogany at 2-1/4" thick. The doors have grooved panels below and 1" thick insulated glass above.

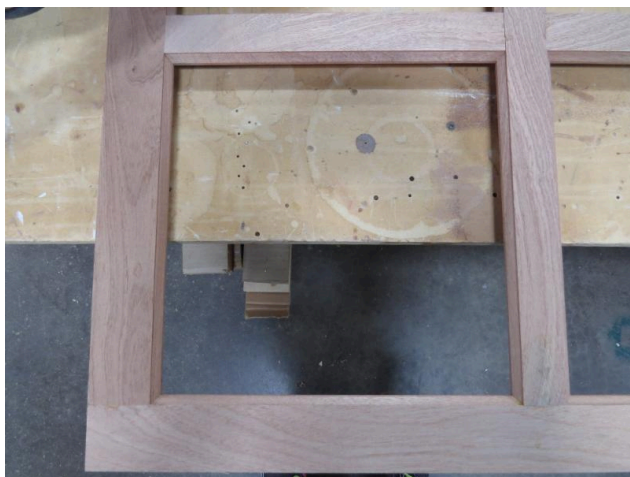


Craftsman Style Doors (left) and Half Lite Single Door



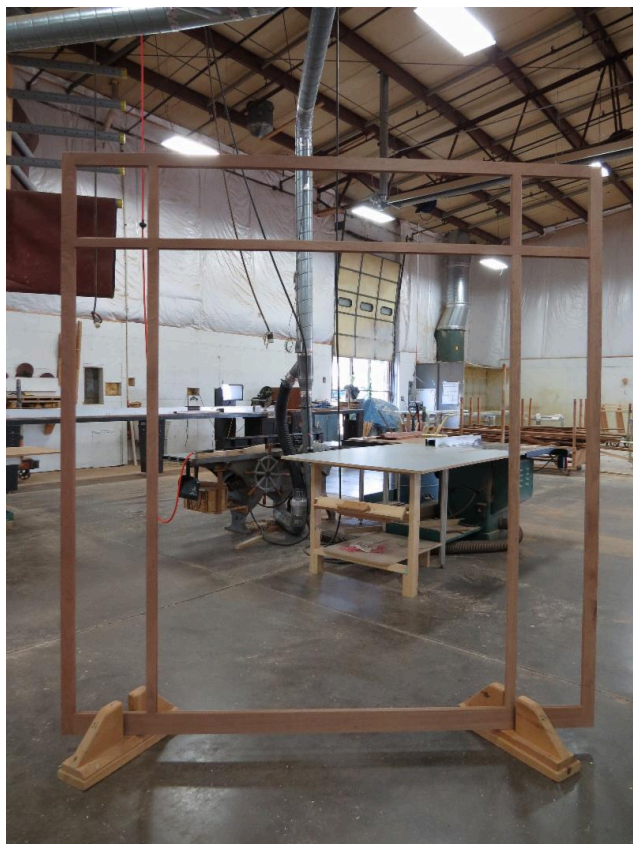
Half Lite Mahogany Double Doors and Single Entry Door with Transoms

In order to increase energy efficiency, wood storm windows were added. The storm windows will protect the original windows in addition to the energy efficiency. Mahogany was used throughout the project for all storm windows due to its weather- and insect-resistant properties.



Detail of Prairie-style Storm Window

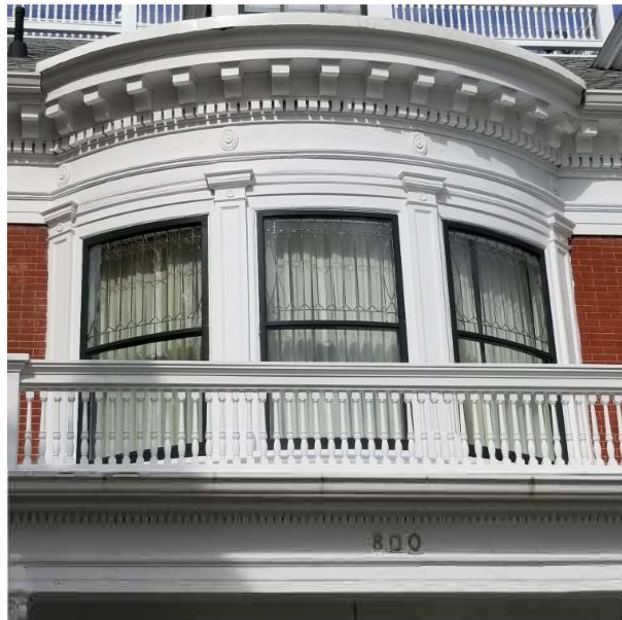
The two side storm windows were 65" x 88" and the center storm window is 83" x 88". These are called the Grant Wood windows as this famed architect decorated and furnished the conversion of this home into a mortuary in 1924 for John B. Turner, the third owner of the History Center's Douglas Mansion. The second owner, the Sinclairs, swapped their house (known as the Bruce more mansion) with the Douglas family in 1906.





Storm Windows Installed

Finished Project







Project Overview

PROJECT NAME: The History Center (also known as the Douglas Mansion)

CONTRACTOR:



ELEMENTS INCLUDED:

Qty 3	Bowed Storm Windows
Qty 1	Bowed Curtain Rod
Qty 7	Entry Doors (2 double doors and 3 single)
Qty 8	Custom Wood Windows
Qty 52	Wood Storm Windows



Adams Architectural Millwork offers many types of custom windows. Our fabricating process allows us to fabricate your window to the exact specifications that your project requires. We can manufacture double hung and single hung windows, shaped tops, bowed windows, and myriad other styles. If you need us to match an existing window or create something new, we can make your vision a reality.

Check out some of the custom windows shown on our website:

Custom Wood Windows

If you are an architect, contractor, or an owner of a historical building or home who is looking to renovate a property, we want to assist you with your architectural millwork needs.



We fabricate historically accurate:

windows
window sash
storm windows
doors
storm doors

Our capabilities include manufacturing custom millwork for homes and buildings across the United States.

We can fabricate products that most large window and door companies will refuse.

Please give us a call at 1.888.285.8120 or visit our website at **www.adamsarch.com** and get your transformation started today.